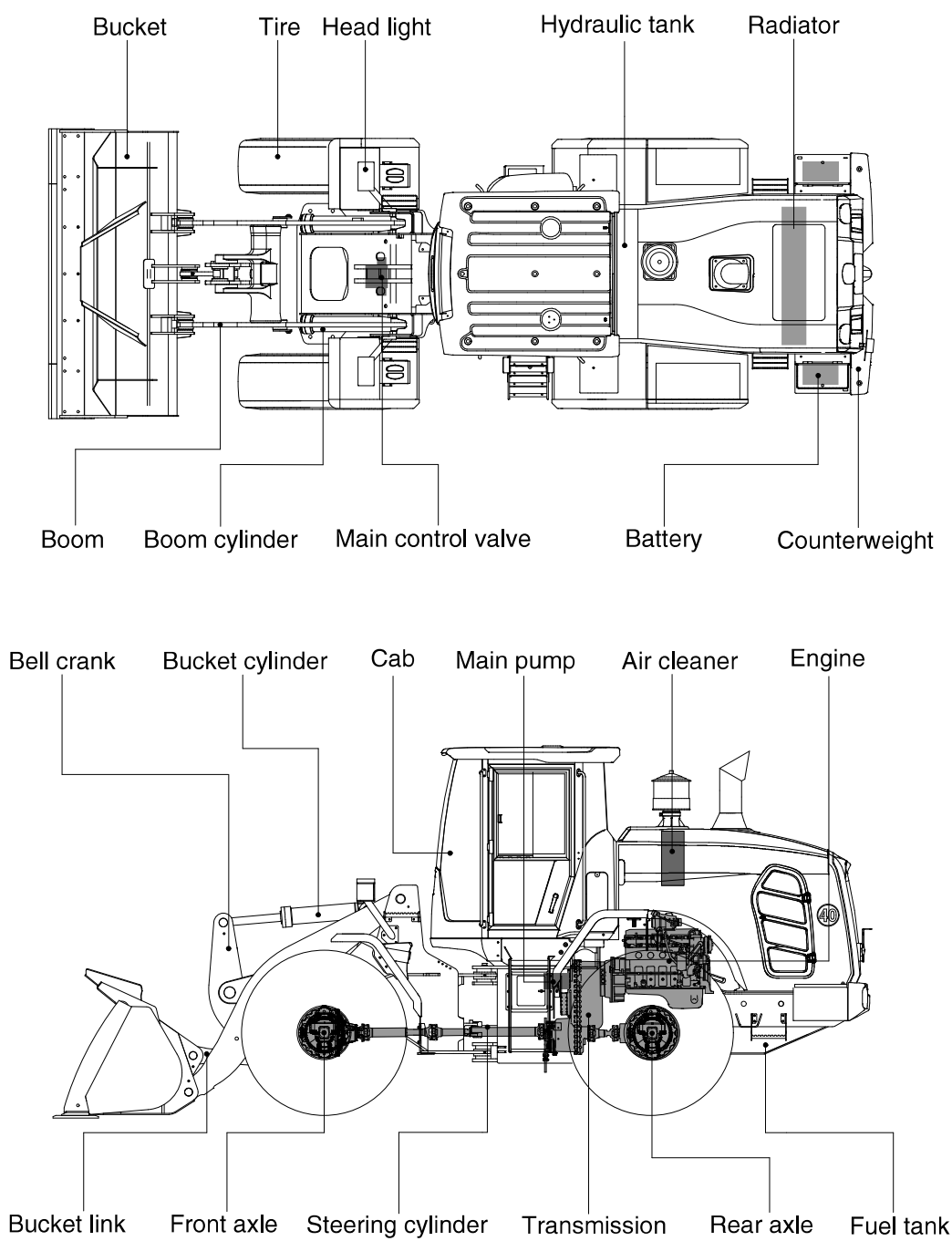


2. SPECIFICATIONS

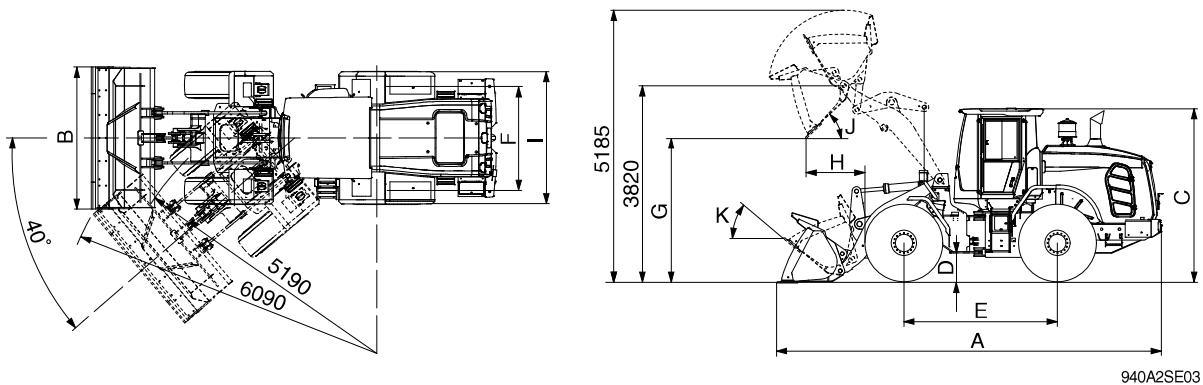
1. MAJOR COMPONENTS



940A2SE01

2. SPECIFICATIONS

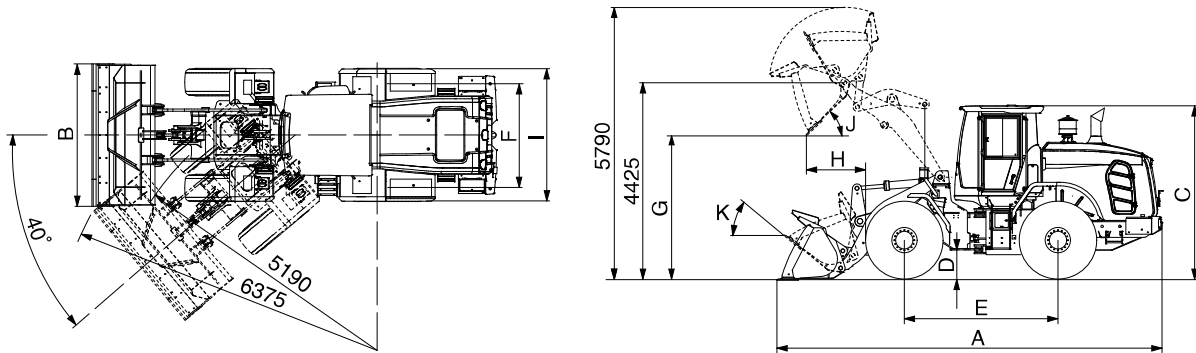
1) WITH BOLT-ON CUTTING EDGE TYPE BUCKET (HL940A)



940A2SE03

Description			Unit	Specification
Operating weight			kg (lb)	13400 (29540)
Bucket capacity	Struck		m³ (yd³)	2.0 (2.6)
	Heaped			2.3 (3.0)
Overall length	A		mm (ft-in)	7600 (24' 11")
Overall width	B			2600 (8' 6")
Overall height	C			3300 (10' 10")
Ground clearance	D			417 (1' 5")
Wheelbase	E			3000 (9' 10")
Tread	F			1930 (6' 4")
Dump clearance at 45°	G			2765 (9' 1")
Dump reach (full lift)	H			1095 (3' 7")
Width over tires	I			2450 (8' 0")
Dump angle	J			degree (°)
Rollback angle (carry position)	K		47	
Cycle time	Lift (with load)		sec	5.5
	Dump (with load)			1.9
	Lower (empty)			3.9
Maximum travel speed			km/hr (mph)	40 (24.9)
Braking distance			m (ft-in)	13.3 (43' 8")
Minimum turning radius (center of outside tire)				5.19 (17' 0")
Gradeability			degree (°)	30
Breakout force			kg (lb)	11800 (26015)
Travel speed	Forward	First gear	km/hr (mph)	7.0 (4.3)
		Second gear		12.8 (7.9)
		Third gear		25.1 (15.6)
		Fourth gear		40 (24.9)
	Reverse	First gear		7.4 (4.6)
		Second gear		13.5 (8.4)
		Third gear		26.5 (16.5)

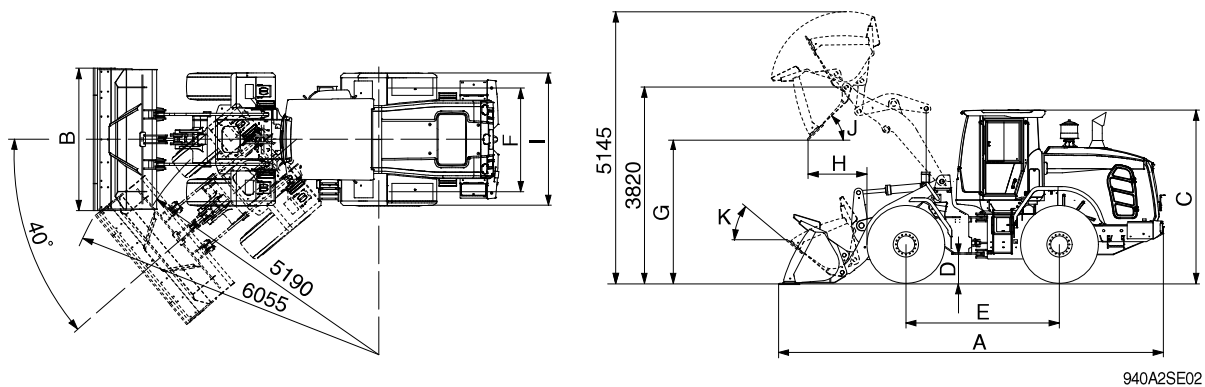
WITH BOLT-ON CUTTING EDGE TYPE BUCKET (HL940A XT)



940A2SE03-2

Description			Unit	Specification
Operating weight			kg (lb)	13860 (30560)
Bucket capacity	Struck		m³ (yd³)	2.0 (2.6)
	Heaped			2.3 (3.0)
Overall length	A		mm (ft-in)	8190 (26' 10")
Overall width	B			2600 (8' 6")
Overall height	C			3300 (10' 10")
Ground clearance	D			417 (1' 4")
Wheelbase	E			3000 (9' 10")
Tread	F			1930 (6' 4")
Dump clearance at 45°	G			3370 (11' 1")
Dump reach (full lift)	H			1090 (3' 7")
Width over tires	I			2450 (8' 0")
Dump angle	J			degree (°)
Rollback angle (carry position)	K		50	
Cycle time	Lift (with load)		sec	5.5
	Dump (with load)			1.9
	Lower (empty)			3.9
Maximum travel speed			km/hr (mph)	40 (24.9)
Braking distance			m (ft-in)	13.3 (43' 8")
Minimum turning radius (center of outside tire)				5.19 (17' 0")
Gradeability			degree (°)	30
Breakout force			kg (lb)	11940 (26325)
Travel speed	Forward	First gear	km/hr (mph)	7.0 (4.3)
		Second gear		12.8 (7.9)
		Third gear		25.1 (15.6)
		Fourth gear		40 (24.9)
	Reverse	First gear		7.4 (4.6)
		Second gear		13.5 (8.4)
		Third gear		26.4 (16.3)

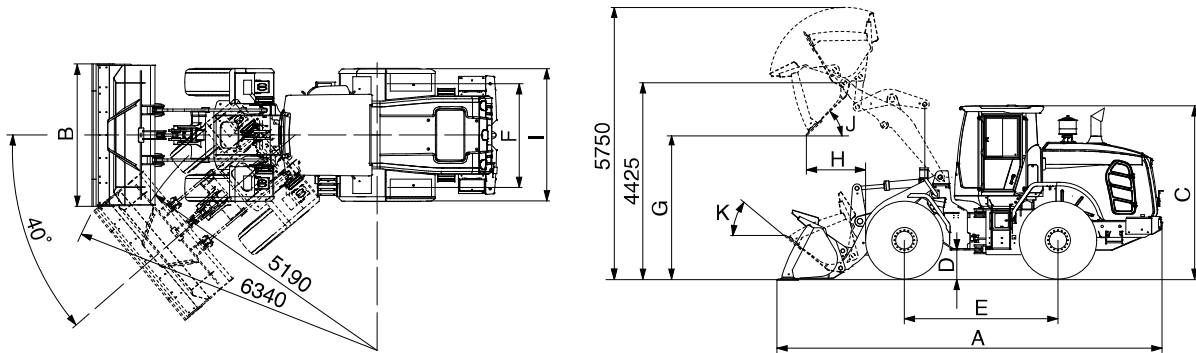
WITH BOLT-ON CUTTING EDGE TYPE NARROW BUCKET (HL940A)



940A2SE02

Description			Unit	Specification
Operating weight			kg (lb)	13360 (29450)
Bucket capacity	Struck		m³ (yd³)	1.8 (2.4)
	Heaped			2.1 (2.7)
Overall length	A		mm (ft-in)	7560 (24' 10")
Overall width	B			2550 (8' 4")
Overall height	C			3300 (10' 10")
Ground clearance	D			432 (1' 5")
Wheelbase	E			3000 (9' 10")
Tread	F			1930 (6' 4")
Dump clearance at 45°	G			2795 (9' 2")
Dump reach (full lift)	H			1065 (3' 6")
Width over tires	I			2450 (8' 0")
Dump angle	J			degree (°)
Rollback angle (carry position)	K		47	
Cycle time	Lift (with load)		sec	5.5
	Dump (with load)			1.1
	Lower (empty)			3.0
Maximum travel speed			km/hr (mph)	40 (24.9)
Braking distance			m (ft-in)	13.4 (44' 0")
Minimum turning radius (center of outside tire)				5.19 (17' 0")
Gradeability			degree (°)	30
Breakout force			kg (lb)	12230 (26960)
Travel speed	Forward	First gear	km/hr (mph)	7.0 (4.3)
		Second gear		12.8 (7.9)
		Third gear		25.2 (15.6)
		Fourth gear		40 (24.9)
	Reverse	First gear		7.4 (4.6)
		Second gear		13.5 (8.4)
		Third gear		26.5 (16.5)

WITH BOLT-ON CUTTING EDGE TYPE NARROW BUCKET (HL940A XT)



940A2SE02-1

Description			Unit	Specification
Operating weight			kg (lb)	13820 (30470)
Bucket capacity	Struck		m³ (yd³)	1.8 (2.4)
	Heaped			2.1 (2.7)
Overall length	A		mm (ft-in)	8150 (26' 9")
Overall width	B			2550 (8' 4")
Overall height	C			3300 (10' 10")
Ground clearance	D			432 (1' 5")
Wheelbase	E			3000 (9' 10")
Tread	F			1930 (6' 4")
Dump clearance at 45°	G			3400 (11' 2")
Dump reach (full lift)	H			1060 (3' 6")
Width over tires	I			2450 (8' 0")
Dump angle	J			degree (°)
Rollback angle (carry position)	K		50	
Cycle time	Lift (with load)		sec	5.5
	Dump (with load)			1.1
	Lower (empty)			3.0
Maximum travel speed			km/hr (mph)	40 (24.9)
Braking distance			m (ft-in)	13.6 (44' 7")
Minimum turning radius (center of outside tire)				5.19 (17' 0")
Gradeability			degree (°)	30
Breakout force			kg (lb)	12370 (27270)
Travel speed	Forward	First gear	km/hr (mph)	7.0 (4.3)
		Second gear		12.8 (7.9)
		Third gear		25.1 (15.6)
		Fourth gear		40 (24.9)
	Reverse	First gear		7.4 (4.6)
		Second gear		13.5 (8.4)
		Third gear		26.3 (16.3)

3. WEIGHT

Item		kg	lb
Front frame assembly		1007	2220
Rear frame assembly		1326	2923
Front fender (LH & RH)		63	139
Counterweight	HL940A	313	690
	HL940A XT	506	1115
Cab assembly		842	1856
Engine assembly		520	1150
Transmission assembly		430	948
Driveshaft (front)		19	41
Driveshaft (center)		19	41
Driveshaft (rear)		14	30
Front axle (include differential)		750	1653
Rear axle (include differential)		760	1675
Tire (20.5 R25, ★★, ★L3)		238	525
Hydraulic tank assembly		142	313
Fuel tank assembly		291	641
Main pump assembly		35	77
Fan & brake pump assembly		17	37
Main control valve (2/3 spool)		44/50	97/110
Boom assembly	HL940A	717	1580
	HL940A XT	943	2078
Bell crank assembly		252	555
Quick coupler assembly		353	778
Bucket link		36	79
2.3 m³ bucket, with bolt on cutting edge		1123	2475
Boom cylinder assembly		81	178
Bucket cylinder assembly (XT)		98/116	216/255
Steering cylinder assembly		17	37
Seat		70	154
Battery		30	66

4. SPECIFICATION FOR MAJOR COMPONENTS

1) ENGINE

Item	Specification
Model	Cummins B6.7
Type	4-cycle turbocharged and charge air-cooled diesel engine
Cooling method	Water cooling
Number of cylinders and arrangement	6 cylinders, in-line
Firing order	1-5-3-6-2-4
Combustion chamber type	Direct injection type
Cylinder bore × stroke	107×124 mm (4.2"×4.9")
Piston displacement	6700 cc (408 cu in)
Compression ratio	17.3 : 1
Rated horse power (Gross)	156 hp at 2200 rpm
Maximum torque at 1300 rpm	76 kgf·m (550 lbf·ft)
Engine oil quantity	18ℓ (4.8 U.S. gal)
Wet weight	583 kg (1285 lb)
High idling speed	2230 ± 50 rpm
Low idling speed	800± 25 rpm
Rated fuel consumption	213 g/kW·hr
Starting motor	Denso PA90L (24V-7.8kW)
Alternator	Denso, 24V-95A
Battery	2×12V×120Ah

2) MAIN PUMP

Item		Specification
Type		Variable piston pump
Capacity		74 cc/rev
Maximum operating pressure		280 kgf/cm ² (3980 psi)
Maximum operating speed		2230 rpm
Rated output flow		149ℓ/min

3) FAN AND BRAKE PUMP

Item		Specification	
		Fan	Brake
Type		Variable piston pump	
Capacity		28 cc/rev	
Maximum operating pressure		250 bar	150 bar
Maximum operating speed		2230 rpm	
Rated output flow		56ℓ/min (14.8 U.S.gpm)	

4) MAIN CONTROL VALVE

Item		Specification
Type		2 spool & 3 spool
Operating method		Hydraulic pilot assist
Main relief valve set pressure		280 kgf/cm ² (3980 psi)
Overload relief valve set pressure		340 kgf/cm ² (4840 psi)

5) REMOTE CONTROL VALVE

Item		Specification
Type		Joystick (or with aux lever)
Control pressure	Minimum	3.7 kgf/cm ² (52.6 psi)
	Maximum	30 kgf/cm ² (427 psi)

6) CYLINDER

Item		Specification
Boom cylinder	Bore dia×Rod dia×Stroke	Ø110×Ø65×738 mm
Bucket cylinder	Bore dia×Rod dia×Stroke	Ø125×Ø70×560 mm
Steering cylinder	Bore dia×Rod dia×Stroke	Ø 65×Ø40×429 mm

7) DYNAMIC POWER TRANSMISSION DEVICES

Item		Specification
Torque converter	Model	ZF 4WG160
	Type	Single-stage, single-phase
	Ratio	2.066 : 1
Transmission	Type	Full-automatic power shift
	Gear shift	Forward fourth gear, reverse third gear
	Control	Electrical single lever type, kick-down system
	Pump rated flow	70ℓ/min (18.5 U.S.gpm) at 2000 rpm
Axle	Drive devices	4-wheel drive
	Front	Front fixed location
	Rear	Oscillation $\pm 11^\circ$ of center pin-loaded
Wheels	Tires	20.5 R25, ★★·L3
Brakes	Travel	Four-wheel, wet-disc type, full hydraulic
	Parking	Spring applied, hydraulic released brake on transmission
Steering	Type	Full hydraulic, articulated
	Steering angle	40° to both right and left angle, respectively